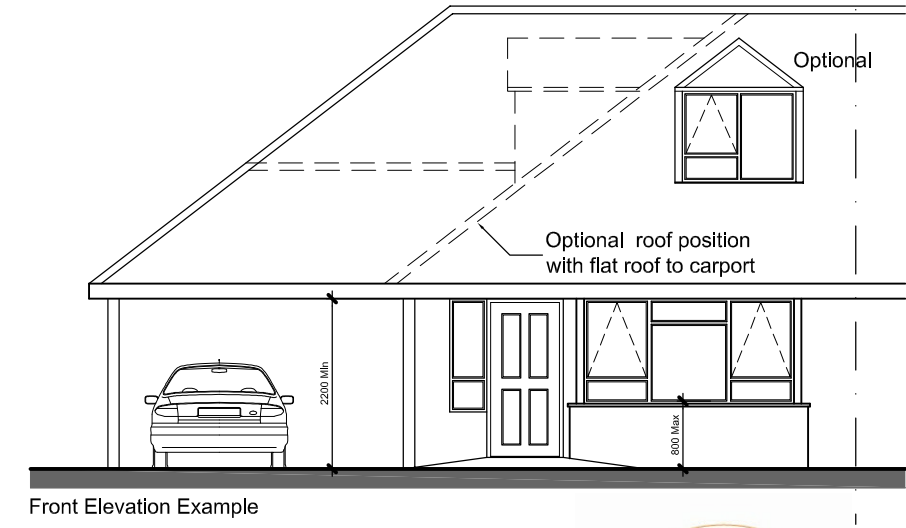
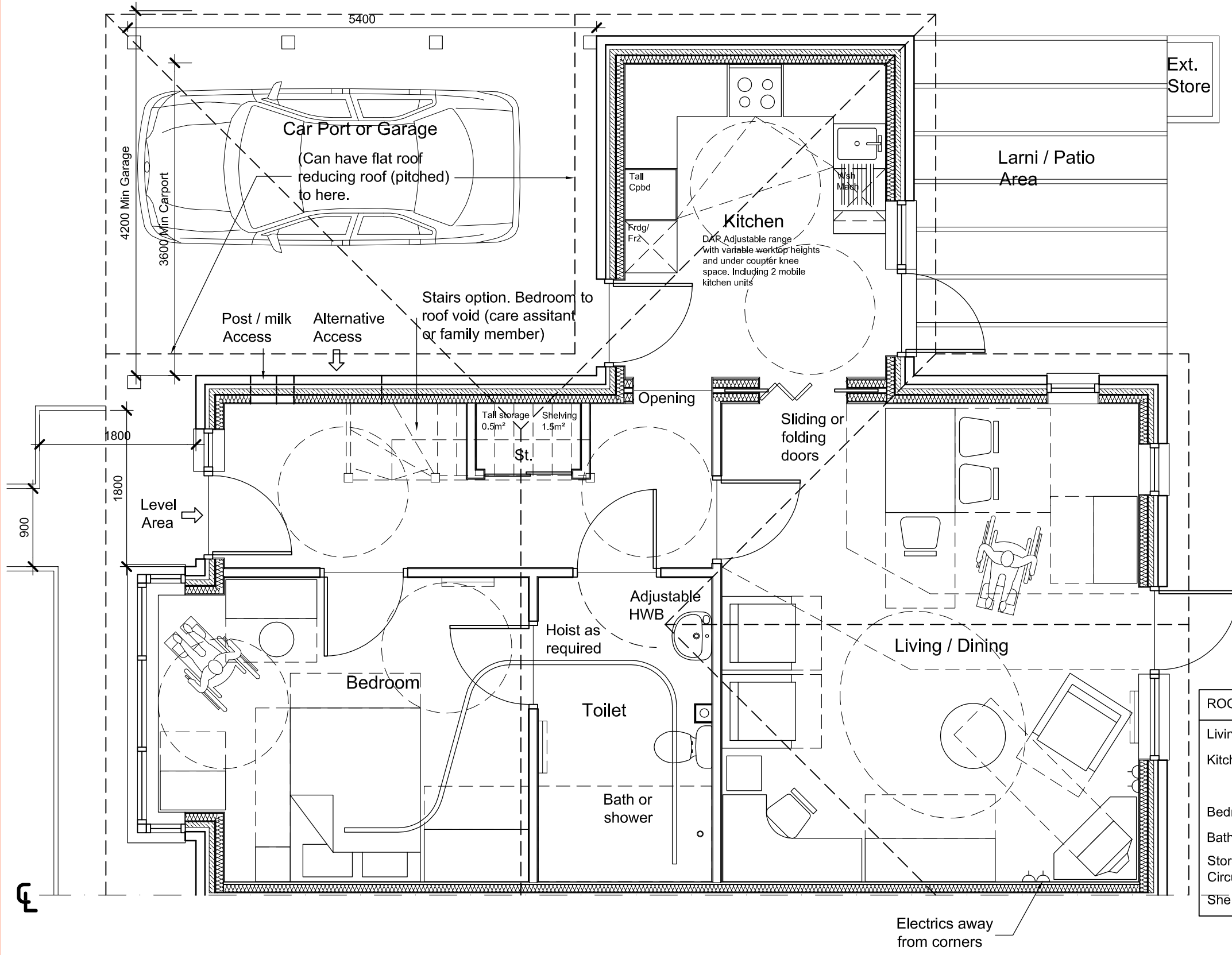


The designs for wheelchair units may need designs which are focused on specific client needs.  
 This template seeks to demonstrate compliance with D & QS (See below)

- NOTES:**
1. DO NOT SCALE DRAWINGS.
  2. ALL WORK AND MATERIALS TO BE IN COMPLIANCE WITH ALL LOCAL CODES, BYLAWS AND REGULATIONS.
  3. ALL LUMBER PROVIDED BY DAC WILL BE BORATE AND HEAT TREATED
  4. ADDITIONAL DRAWINGS MAY BE ISSUED FOR CLARIFICATION TO ASSIST THE PROPER EXECUTION OF WORK. SUCH DRAWINGS WILL HAVE THE SAME MEANING & INTENT AS IF THEY WERE INCLUDED.
  5. THIS DRAWING IS THE EXCLUSIVE PROPERTY OF "DAC INTERNATIONAL" AND SHALL NOT BE REPRODUCED OR USED WITHOUT WRITTEN AUTHORISATION.



**HQI (Core Areas)**

MIN REQUIRED:

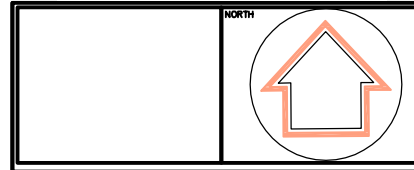
Unit = 41  
 Layout = 32  
 Services = 22

ACTUAL:

Unit = 93  
 Layout = 83  
 Services = 83  
 GIFA = 71.50 sqm (N/A)

The Housing Corporation has not verified the HQI score and the HQI score is to be assessed for each individual development.

ROOM	OVERALLS (m)	AREAS (sq m)
Living / Dining	5.5 x 4.8	26.40
Kitchen	3.6 x 3.0	10.80
	Sub total	37.20
Bedroom (main)	4.2 x 3.5	14.15
Bath	3.5 x 2.0	7.0
Storage / Circulation		10.58
Shelving		3.5



Rev.	ITEM	DATE
A	Housing Corporation audit check amendments	21.02.08

REVISIONS



3140 CARP ROAD, OTTAWA, ONTARIO  
 CANADA K0A 1L0  
 TEL: +1-613-839-0888  
 FAX: +1-613-839-0939  
 e-mail: dac@dac.ca

CLIENT/PROJECT NAME:  
 WHEELCHAIR UNIT 1 BED BUNGALOW

PROJECT NUMBER:  
 WO17 - 06

DRAWING NAME:  
 FURNITURE LAYOUT

SCALE	DESIGN FOR	DRAWING NUMBER
1:50 / 1:100	DAC INTL	DB 1
DATE DRAWN: DEC 2006	CHECKED BY: P.M.	
DESIGN & DRAWN BY: GJT	LAST REVISION DATE: 21/02/08	

Disabled unit 1 Bed bungalow  
 (With option of first floor bedroom & en-suite)

All designed with reference to:  
 Design & Quality Standards (D & QS)  
 & Wheelchair Housing Design Guide  
 2nd Edition (Stephen Thorpe & Habinteg HA).