

**NOTES:**  
 1. DO NOT SCALE DRAWINGS.  
 2. ALL WORK AND MATERIALS TO BE IN COMPLIANCE WITH ALL LOCAL CODES, BYLAWS AND REGULATIONS.  
 3. ALL LUMBER PROVIDED BY DAC WILL BE BORATE AND HEAT TREATED.  
 4. ADDITIONAL DRAWINGS MAY BE ISSUED FOR CLARIFICATION TO ASSIST THE PROPER EXECUTION OF WORK. SUCH DRAWINGS WILL HAVE THE SAME MEANING & INTENT AS IF THEY WERE INCLUDED.  
 5. THIS DRAWING IS THE EXCLUSIVE PROPERTY OF "DAC INTERNATIONAL" AND SHALL NOT BE REPRODUCED OR USED WITHOUT WRITTEN AUTHORISATION.

### HQI (Core Areas)

MIN REQUIRED:

Unit = 41  
 Layout = 32  
 Services = 22

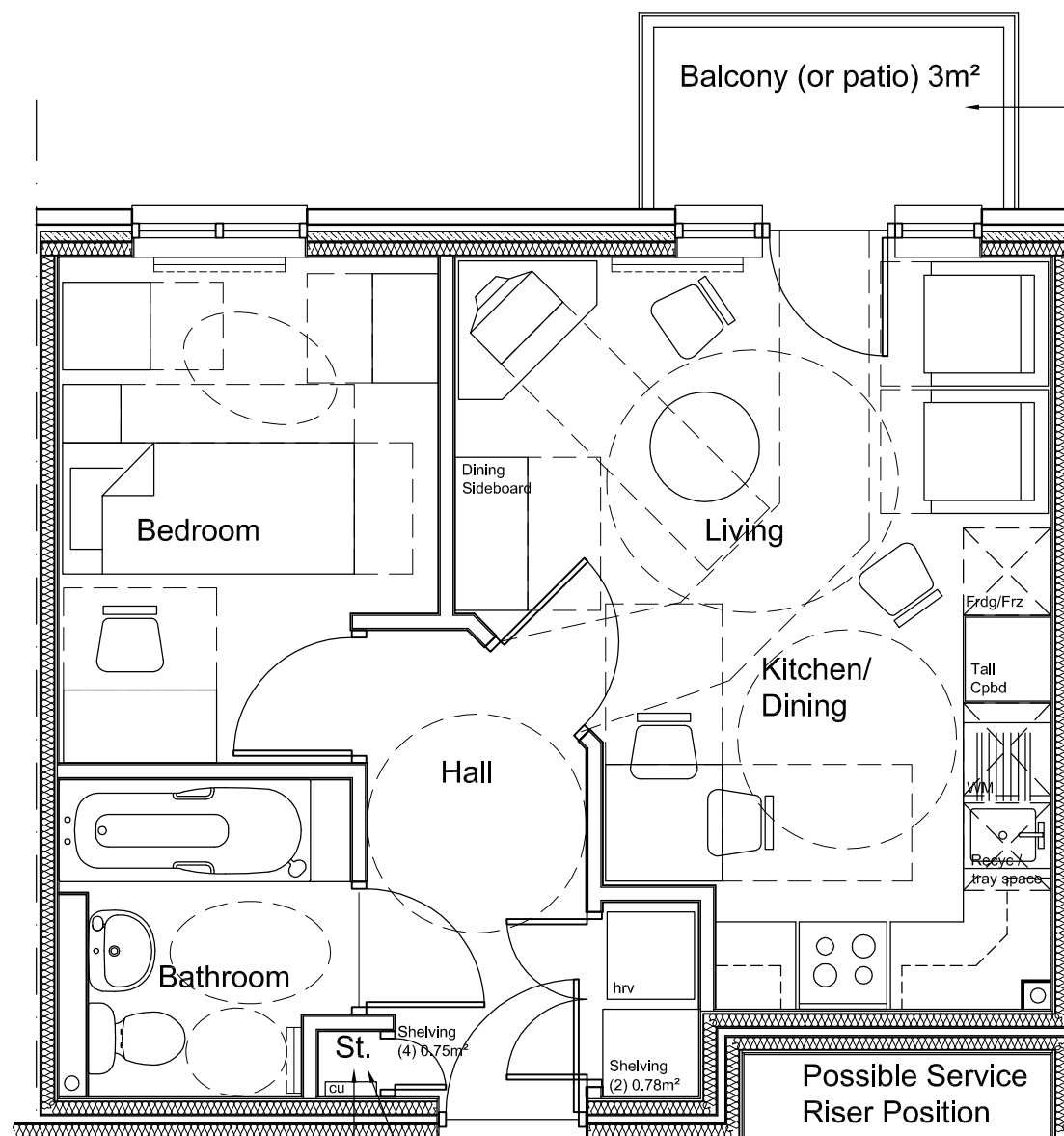
ACTUAL:

Unit = 60  
 Layout = 56  
 Services = 66  
 GIFA = 37.60 sqm (7.4%)

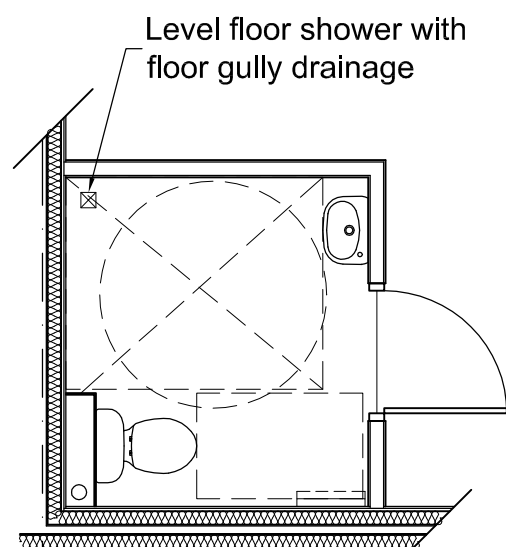
The Housing Corporation has not verified the HQI score and the HQI score is to be assessed for each individual development.



ROOM	OVERALLS (m)	AREAS (sq m)
Living / Dining	4.0 x 2.5	10.38
Kitchen	3.0 x 2.7	6.71
Utility Room	N/A	N/A
Sub total		18.40
Bedroom (main)	3.5 x 2.6	8.39
Bedroom 2	N/A	N/A
Bath	2.2 x 2.0	4.15
Storage / Circulation		6.14
Shelving		1.53



Free standing balcony option if limited amenity space



Alternative shower room layout

Non-lifetime home units to be provided with additional shelving

Store to be omitted in lifetime home units to ensure 1100 x 700 zone in front of W.C. Only relevant to ground floor units

**L.T. COMPLIANT**  
 (if ground floor unit)

hrv = heat recovery ventilator at high level in cupboard still giving 1950mm height of storage



Rev.	ITEM	DATE
A	Housing Corporation audit check amendments	21.02.08

REVISIONS



3140 CARP ROAD, OTTAWA, ONTARIO  
 CANADA K0A 1L0  
 TEL: +1-613-839-0888  
 FAX: +1-613-839-0939  
 e-mail: dac@dac.ca

CLIENT/PROJECT NAME: DAC 1.1 FLAT LAYOUT

PROJECT NUMBER: WO17 - 06

DRAWING NAME: FURNITURE LAYOUT

SCALE:	DESIGN FOR:	DRAWING NUMBER:
1:50	DAC INT'L	1.1
DATE DRAWN: DEC 2006	CHECKED BY: P.M.	
DESIGN & DRAWN BY: GJT	LAST REVISION DATE: 21/02/08	